

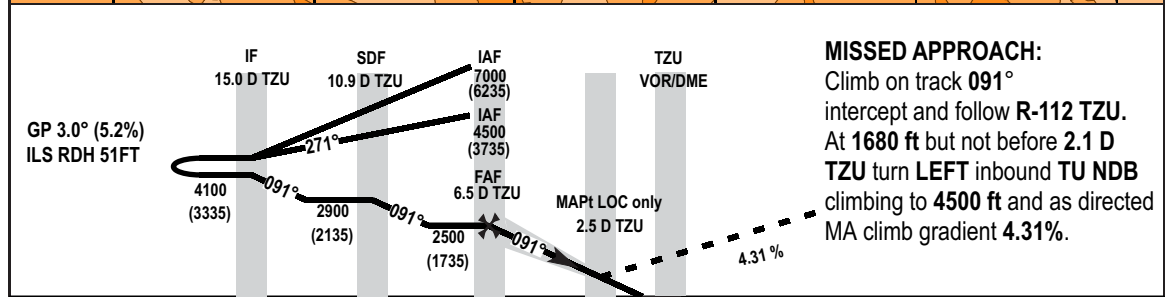
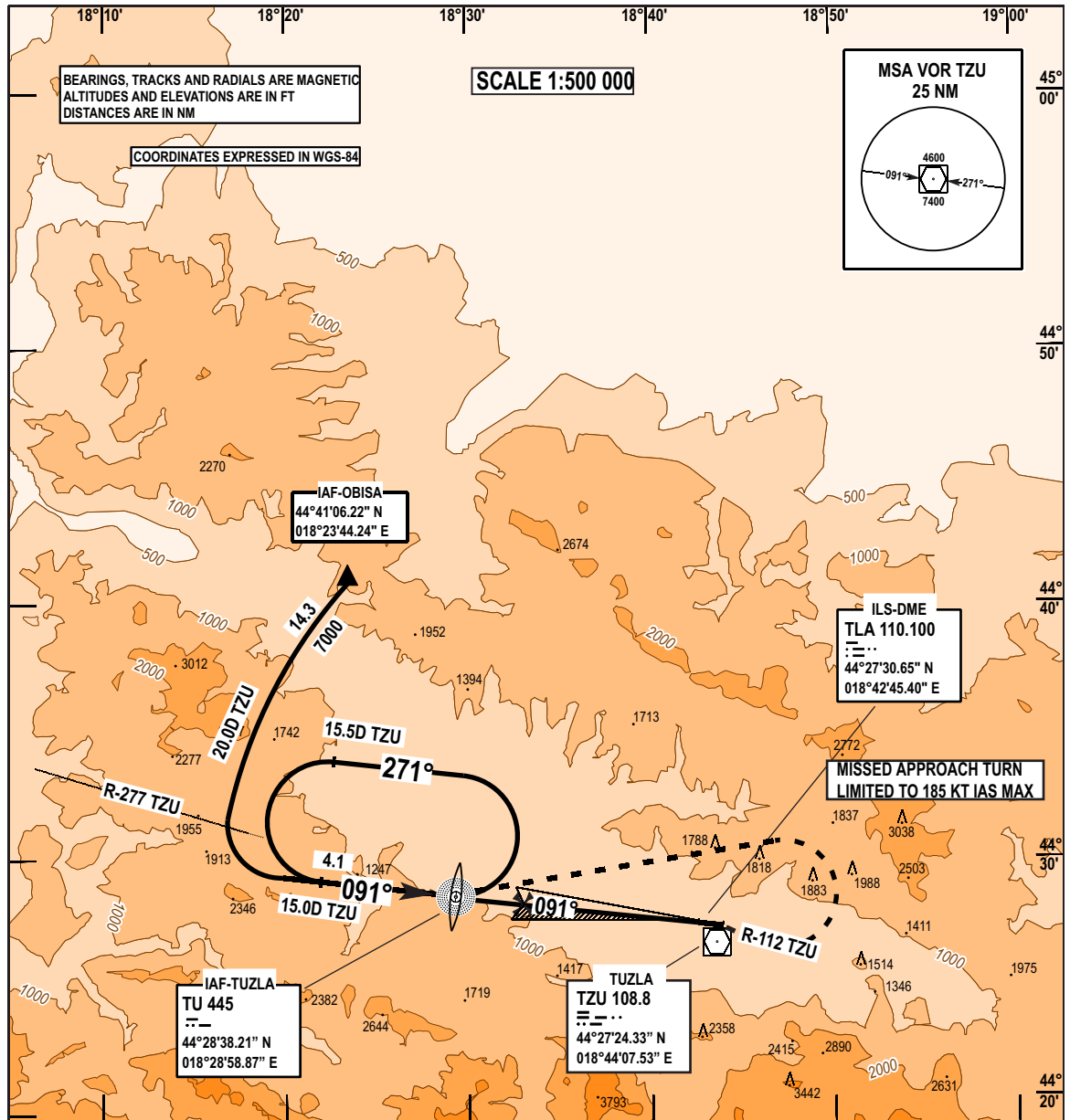
**INSTRUMENT
APPROACH
CHART - ICAO**

**AERODROM ELEV 784 FT
HEIGHTS RELATED TO
THR RWY 09 ELEV 765 FT**

**TRANSITION
ALTITUDE
10 000 FT
VAR 5° E (2020)**

**APP 120.350
TWR 132.925
ATIS 133.825**

**TUZLA (LQTZ)
ILS Z RWY 09
MISSED APP 4.31%**



MISSED APPROACH:
Climb on track 091° intercept and follow R-112 TZU. At 1680 ft but not before 2.1 D TZU turn LEFT inbound TU NDB climbing to 4500 ft and as directed MA climb gradient 4.31%.

OCA (H)	NM to/from THR09			
	A	B	C	D
ILS CAT I - MA 4.31%	1013 (248)			
LOC ONLY - MA 4.31%	1150 (385)			
Circling	1660 (895)	1760 (995)	2280 (1515)	2390 (1625)

Note: Visual circling not authorised south of RWY due to highly mountainous terrain

Rate of descent FT/MIN	FAF to MAPt DISTANCE 3.2 NM TIMING NOT AUTHORISED FOR DEFINING THE MAPt					
	KT	70	90	100	120	140
MIN : SEC	3:31	2:44	2:28	2:03	1:46	1:33
Rate of descent FT/MIN	385	495	549	659	768	882

CHG: ATIS added

THIS PAGE INTENTIONALY LEFT BLANK